



## "EXQUISITE JADE ROCK" | RENEWAL OF THE NANJING ROAD BUND AREA, SHANGHAI

Nanjing Road Bund area, Shanghai's most glamorous historical center. It addresses issues such as overcrowding, insufficient public space and lack of maintenance of heritage buildings. We inherit the cultural genes of the Bund and carry out organic renewal of the state of existing buildings. By leveraging the concept of Shanghai "Exquisite Jade Rock", we reorganize and connect the inner courtyards of neighborhoods to create a "porous" spatial structure that is accessible for everyone to enjoy.



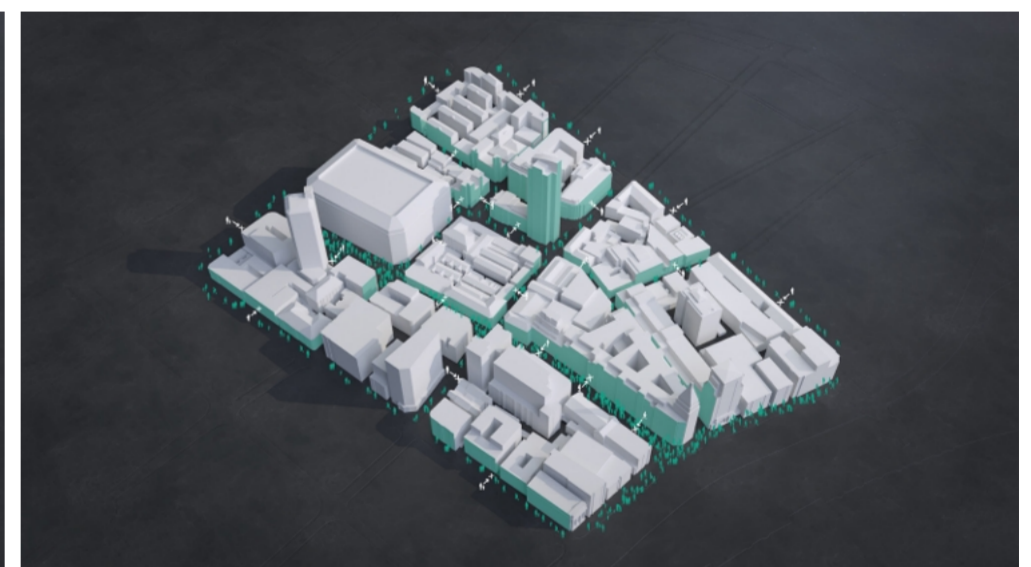
### KEY CHALLENGES



Decaying Buildings | Occupied Courtyards



Crowded Main Streets | Shabby Backstreets



Enclosed Blocks | Deficient Public Spaces

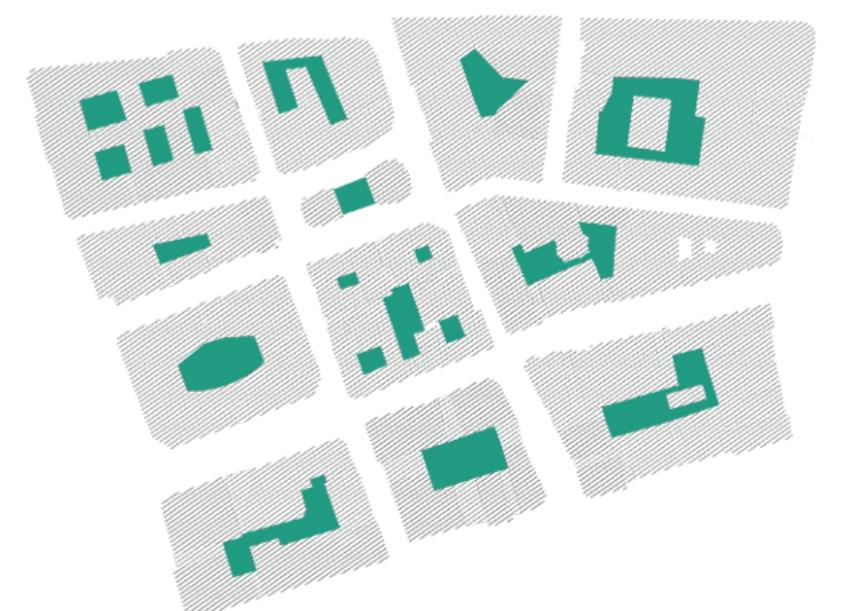
### FROM "EXQUISITE JADE ROCK" TO "POROUS STRUCTURE"



Exquisite Jade Rock In Shanghai



Concept



Porous Structure

# COURTYARDS & ACCESSIBILITY

## Open Courtyards



## Thematic Rings



## Lanes and Passages



## Traffic Calming Streets



# HISTORICAL GENE

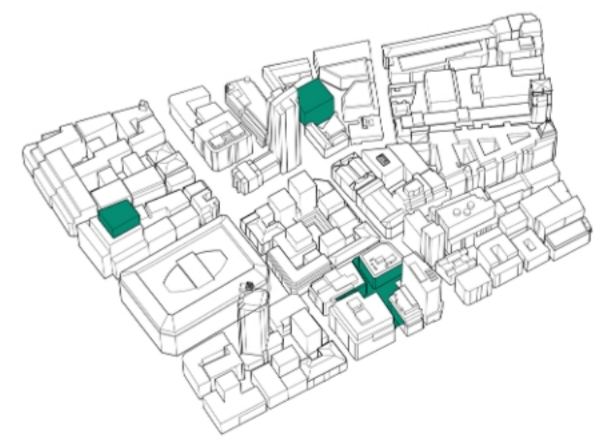
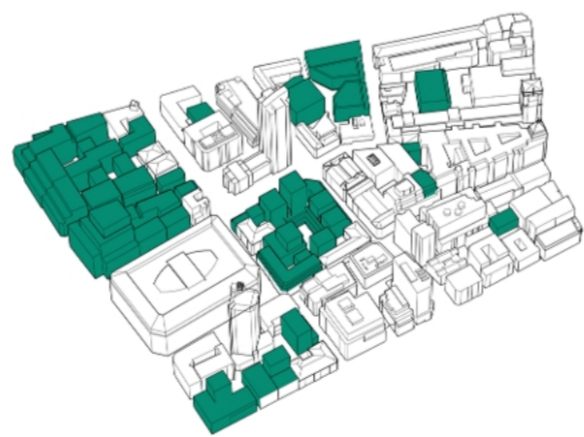
- Low-to-Mid Rise High Density
- Segmented Structure
- Continuous Interface
- Mixed-used Function



Preservation and Renewal

New Buildings in Historical Atmosphere

Special Buildings as Highlights



Dianchi Rd.



Jiangxi Rd.(M)



Block 171

# SOCIETY-ORIENTED PLANNING



## ACTIONS

Improvement of the age and employment structure of the community population involved in the planning

7x24h open high-quality public space network

Socially equal and accessible community service spaces

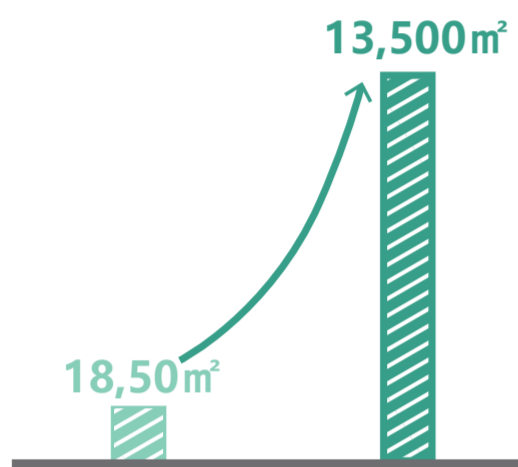
Promotion of employment, community development, and commercial service

Multi-level residential spaces

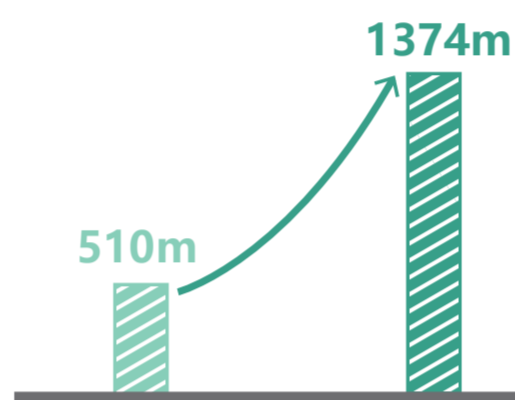
Establishment of a social guidance process to foster community identity



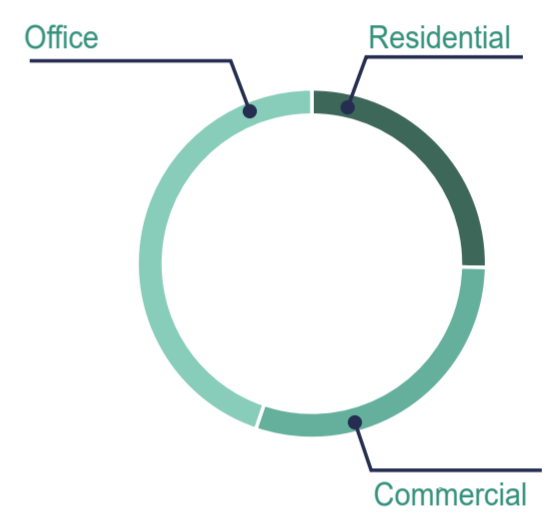
### Growth of Public Spaces



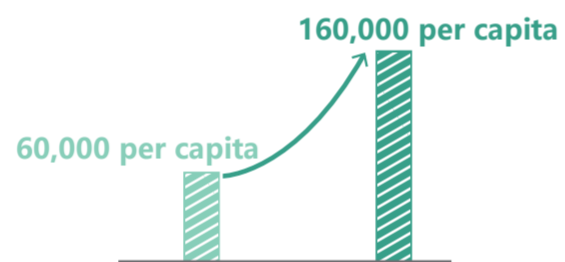
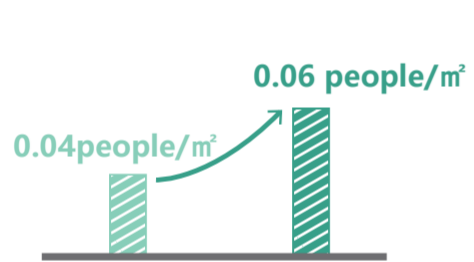
### Growth of Pedestrian-friendly Streets



### Resilient Mixed Function



### Enhancement of Quantity and Quality of Local Employment



### Standard Modern Community Service System

